

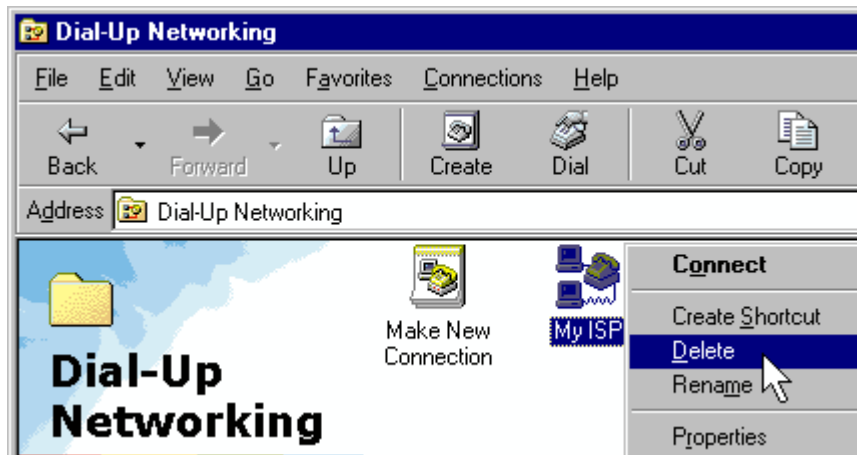
TreeWalk and Windows 98 Dial-up

Make sure you have ALL the information required to connect to your ISP before you begin!

We've provided this page to assist you to create a new dial-up connection in Windows 98.



Double-click the "My Computer" icon on your desktop to open it, then double-click the "Dial-up Networking" icon.

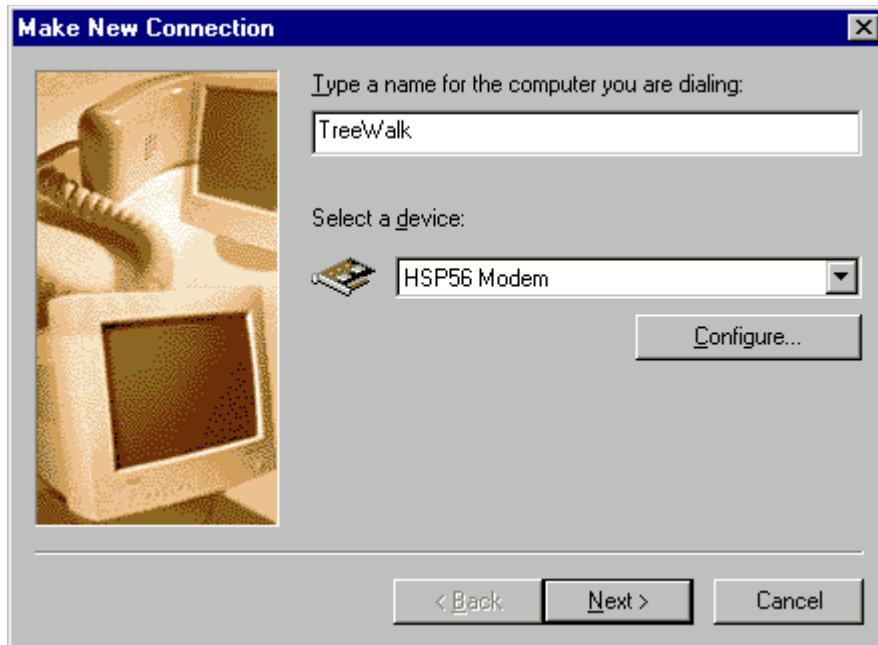


Right-click your old connection icon and proceed to delete it.

Please proceed to the following image on the next page of this document.

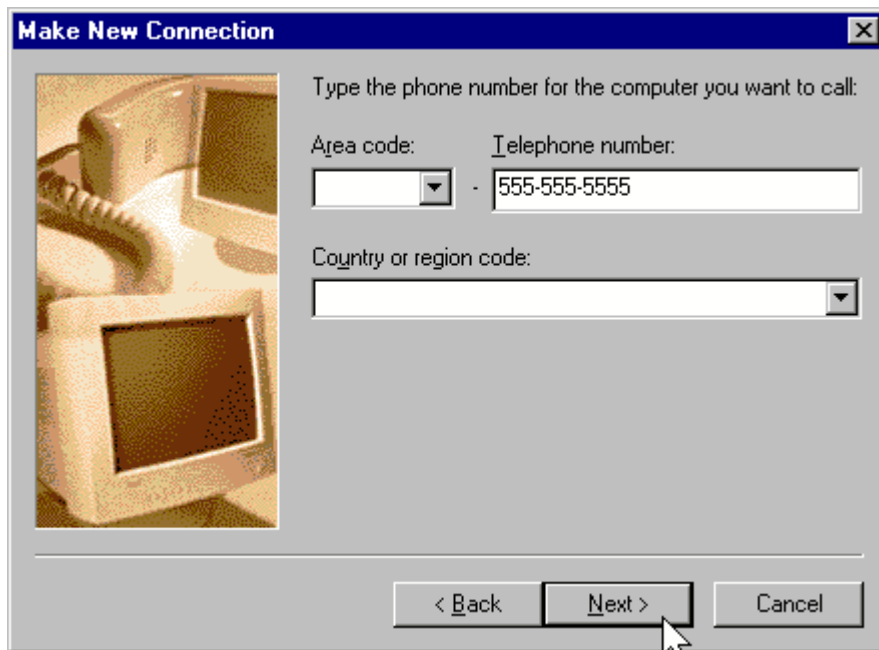


Next, double-click the "Make New Connection" icon to begin creating one.

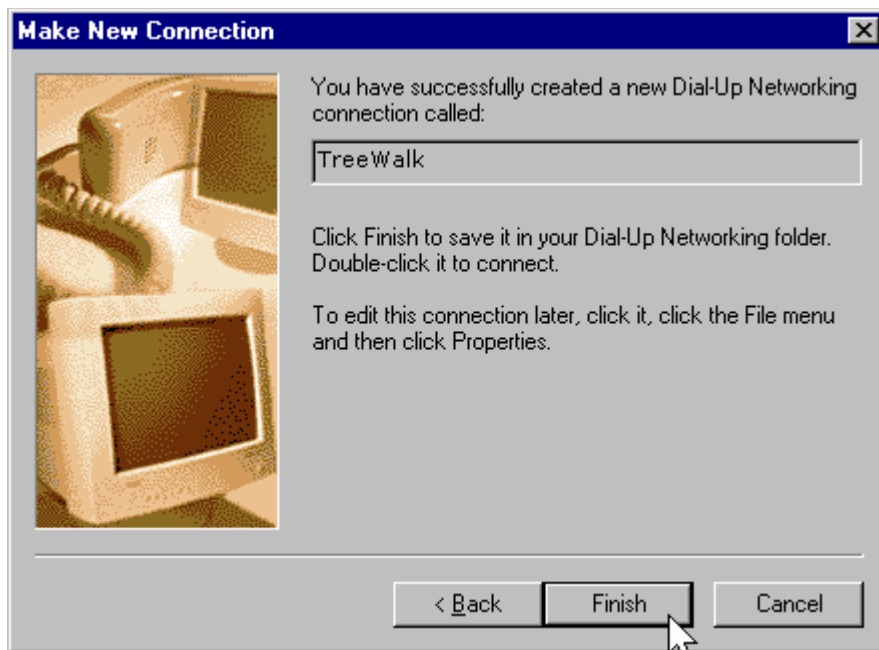


That should open the "Make New Connection" dialogue for you. Enter an appropriate name for your new connection and click "Next".

Please proceed to the following image on the next page of this document.

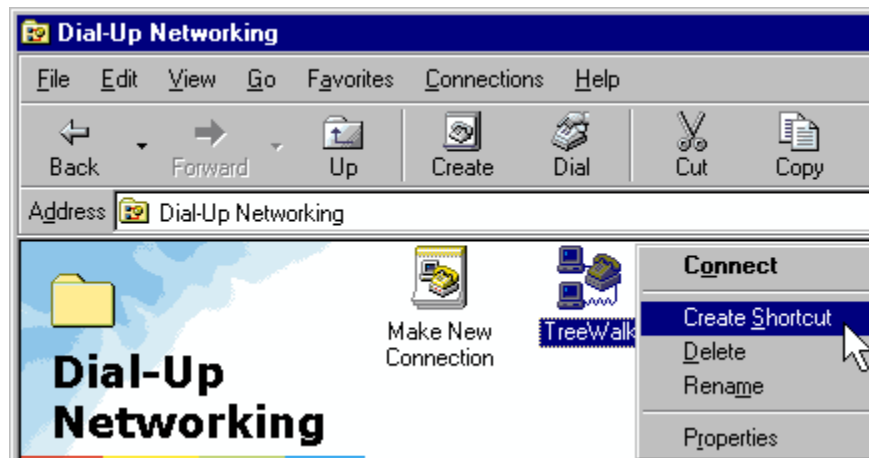


Enter all of your telephone information that you need for your connection and click "Next".



You've successfully created a new connection, select "Finish" to save it to the Dial-up Networking folder. You can make a shortcut to the new connection, as described next.

Please proceed to the final image on the next page of this document.



Return to the Dial-up Networking folder, right-click the new icon and select "Create Shortcut" to place one on your desktop.

That's all there is to it! Happy surfing!

Copyright © 2000-2005 ntcanuck.com All rights reserved